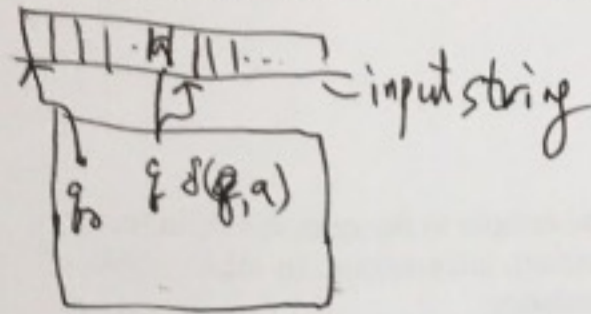


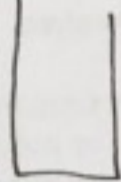
제 15강 N/A(+) Chap 6. Pushdown Automata.

Pushdown Automata = Finite state Automata + Stack. *type 2 lang.*



FA

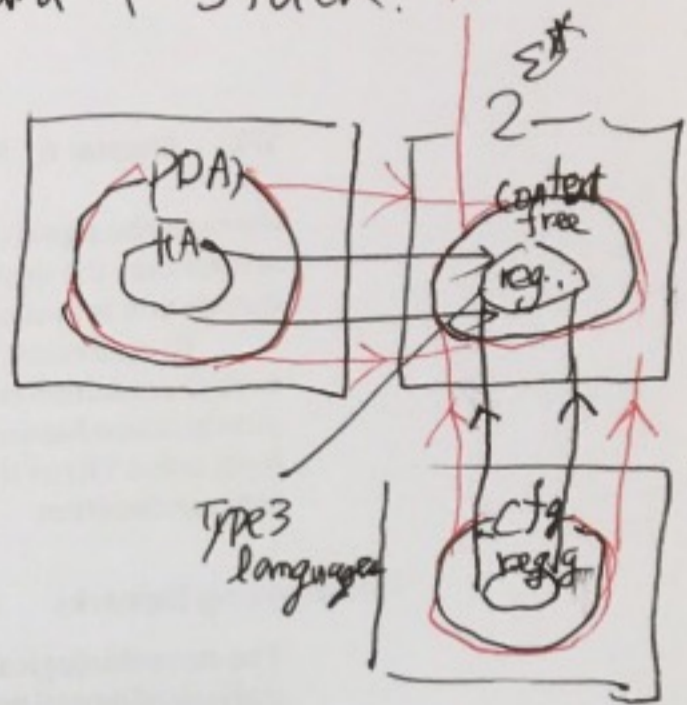
(no memory except states)



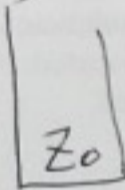
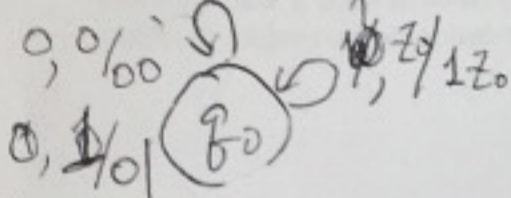
Stack

R/W memory

PDA

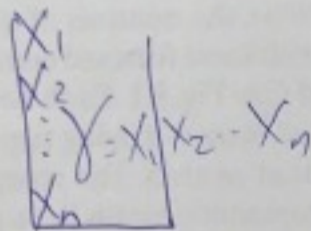
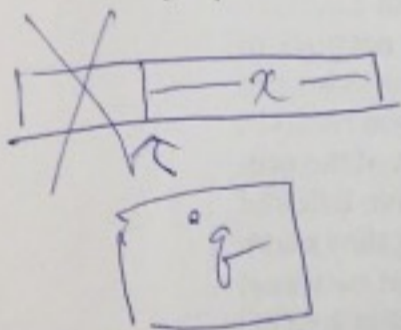


$$L_{ww^R} = \{ ww^R \mid w \in (0+1)^* \}$$



~~(1, 0/10)~~

1/1/11



Configuration  $(q, x, \gamma) \in Q \times \Sigma^* \times \Gamma^*$

Thm 6.9

